

EVENT SCHEDULE

SATURDAY 22nd March 2025

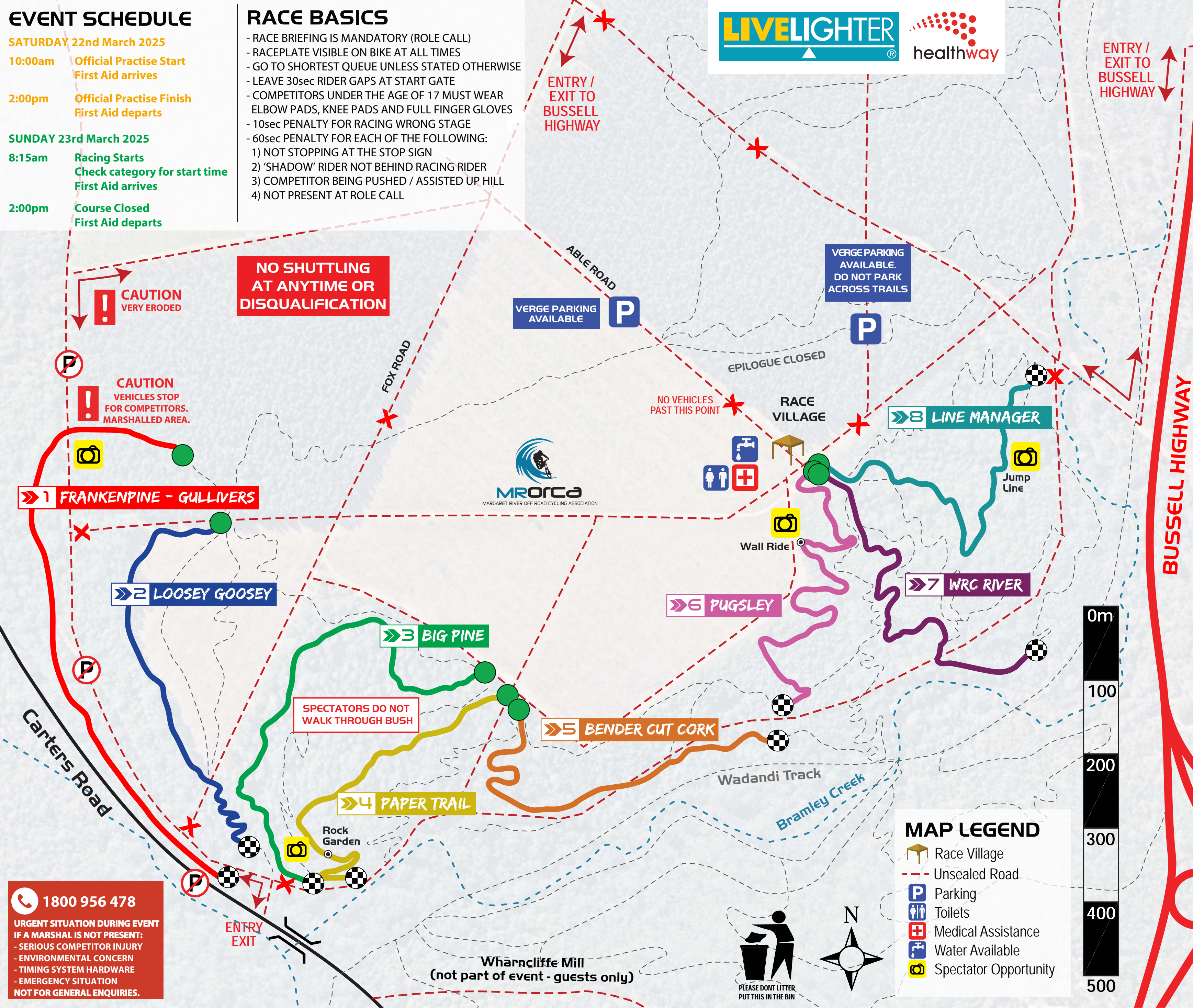
- 10:00am Official Practise Start
First Aid arrives
- 2:00pm Official Practise Finish
First Aid departs

SUNDAY 23rd March 2025

- 8:15am Racing Starts
Check category for start time
First Aid arrives
- 2:00pm Course Closed
First Aid departs

RACE BASICS

- RACE BRIEFING IS MANDATORY (ROLE CALL)
- RACEPLATE VISIBLE ON BIKE AT ALL TIMES
- GO TO SHORTEST QUEUE UNLESS STATED OTHERWISE
- LEAVE 30sec RIDER GAPS AT START GATE
- COMPETITORS UNDER THE AGE OF 17 MUST WEAR ELBOW PADS, KNEE PADS AND FULL FINGER GLOVES
- 10sec PENALTY FOR RACING WRONG STAGE
- 60sec PENALTY FOR EACH OF THE FOLLOWING:
 - 1) NOT STOPPING AT THE STOP SIGN
 - 2) 'SHADOW' RIDER NOT BEHIND RACING RIDER
 - 3) COMPETITOR BEING PUSHED / ASSISTED UP HILL
 - 4) NOT PRESENT AT ROLE CALL



CATEGORY INFORMATION

GROUP A

U9, Women Welcome		6	8
U11 Whippets	MANDATORY 5 FIRST	5	6 8
U13 Whippets	MANDATORY 1 OR 2 FIRST	1 2 3	5
Men Welcome	MANDATORY 1 OR 2 FIRST	1 2 3	5 6

SHADOW RIDERS MUST FOLLOW COMPETING RIDERS ON RACE STAGE

0815 Mandatory Briefing / Start
1015 Estimated Finish then Presentations

GROUP B

WU15, MU15	STAGES 5 AND 6 LAST	1 2 3 4 5 6
WU17, MU17	STAGES 5 AND 6 LAST	2 3 4 5 6 7 8

0845 Mandatory Race Briefing / Start
1300 Estimated Finish then Presentations

ENDURO JAM! GROUP C AND D ONLY

MULTIPLE ATTEMPTS PERMITTED.
FASTEST TIME USED IN RESULTS.

GROUP C

M30-39, M40-49, M50-59, M60+	2 3 4 5 6 7 8
WU19 W19-29 W30-39 W40-49 W50+	2 3 4 5 6 7 8
WFull Enduro, WeBike	1 2 3 4 5 6 7 8
MeBike	1 2 3 4 5 6 7 7 8

EBIKE'S MUST BE SET TO FACTORY SPECIFICATIONS (pedal assist only, max 250W, assist up to 25km/h)
MeBike must complete stage 7 twice

0945 Mandatory Race Briefing / Start
1400 Course Closure / Final SIAC Return

GROUP D

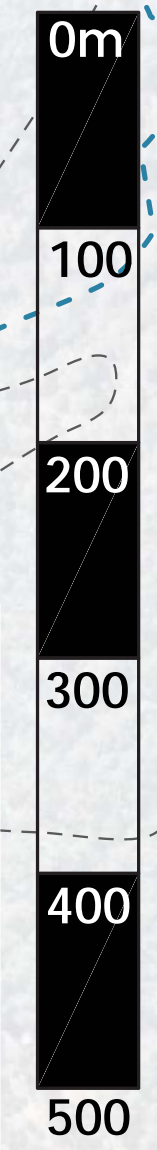
MU19, M19-29	1 2 3 4 5 6 7 8
MFull Enduro	1 2 3 4 5 6 7 8

ANY ORDER - GO TO SHORTEST QUEUE CANNOT COLLECT SIAC UNTIL 1145

1000 Mandatory Race Briefing / Start
1400 Course Closure / Final SIAC Return

MAP LEGEND

- Race Village
- Unsealed Road
- Parking
- Toilets
- Medical Assistance
- Water Available
- Spectator Opportunity



1800 956 478

URGENT SITUATION DURING EVENT IF A MARSHAL IS NOT PRESENT:

- SERIOUS COMPETITOR INJURY
- ENVIRONMENTAL CONCERN
- TIMING SYSTEM HARDWARE
- EMERGENCY SITUATION

NOT FOR GENERAL ENQUIRIES.

